

TEMP CONTROL SPECIALIST

MEDICAL GRADE

22°C



Safe



Stable



Eco



CFC-free



Alarms



PLATELET INCUBATORS

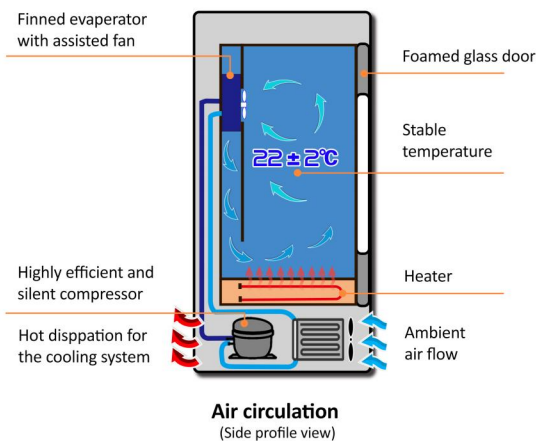
Platelet storage

22°C ± 2°C

Life-saving platelet products are critical to patient care. The Incubators and Agitators combine innovations in performance, reliability and efficiency to offer optimized platelet storage and support blood bank compliance.



TEMPERATURE CONTROL TECHNOLOGY

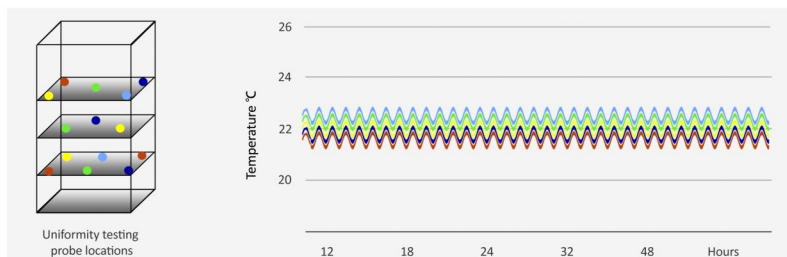


» Innovative temperature control

The unit features a heating device at the bottom and a refrigeration evaporator at the top. During the cooling process, the cold air sinks, while during the heating process, the hot air rises. This design ensures rapid heating or cooling, regardless of the process involved.

» Ultimate uniformity

The chamber maintains temperatures within +/-1°C throughout the entire compartment, ensuring confidence that items are stored at the correct temperature regardless of their placement in the chamber.



» Optimized fluctuation

Maintain superior temperature stability @ 22±2°C, avoiding rapid and significant changes in temperature. This ensures that the stored platelets are consistently stored in their optimal environment, without compromise.

» Fast recovery

Faster temperature recovery even after prolonged door openings. The forced-air circulation system maintains consistent temperatures, ensuring that contents are stored at the right temperature even when the unit is opened multiple times per hour.

PLATELET INCUBATORS



Safe storage

to safeguard patient samples and ensure medications remain efficacious.



Precise temp control

to ensure stable and accurate temperatures in the chamber



User-friendly

to bring convenience and easy maintenance to users



Eco-friendly

to reduce operating costs, provide a quiet working environment and support sustainability initiatives



MDC-5



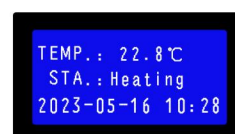
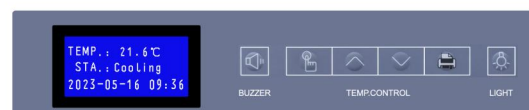
MDC-10



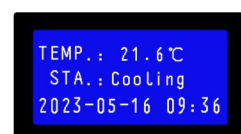
FEATURES

» C309 controller

- » A digital microprocessor temperature controller with LCD display and alarm back up power.
- » Accurately controlling the cooling or heating process to maintain a constant temperature of 22°C. Temperature setting range: 20°C ~ 24°C.
- » The precision of display and control is 0.1°C.
- » Alarms : High/low temperature, power failure, sensor error, door ajar, backup battery for 72 hours.
- » Extensions : Remote alarm interface



Heating status



Cooling status

PLATELET INCUBATORS

» Ultimate insulation

The cabinet is insulated with a thick layer of high-density PU foam, effectively sealing and maintaining the internal temperature. The door, constructed with the same insulation material, is equipped with double-layer vacuum glass coated with LOW-E film. This design ensures secure platelet preservation while providing enhanced safety measures.



Foamed glass door

» Temperature logging

The unit comes with a thermal printer as standard, which prints real-time temperatures at 5-minute intervals.



Thermal printer

» Electrically heated glass door

Fog or condensation often occurs when opening and closing the door. However, this can be easily prevented with the electrically heated glass door, which quickly evaporate any moisture.

» High quality materials

The units feature a high-quality coated cold-rolled steel exterior and stainless steel interior, offering antibacterial, anti-corrosive, and easy-to-clean properties. The agitator and racks are also constructed with stainless steel, ensuring reliability and hygiene.



Stainless steel interior



Super Durable Agitator

Agitation speed :
60 cycles/minute (CPM)

Horizontal amplitude :
50 mm



» Gentel glide rails

Imported SUS 304 stainless steel ball bearing sliders have a small gap, low noise, and can continuously operate with a maximum load of 50 kg.

» Ultra-long lifespan motors

Imported coaxial motors offer numerous advantages such as low heat generation, low power consumption, minimal noise levels, and a high reliability with minimal failures.



CONSTRUCTION

C309 Controller

Fan-assisted evaporator
Highly efficient finned evaporator with high airflow fan

Platelet racks
The multi-layer stainless steel racks are equipped with stainless steel ventilated drawers

Platelet agitator
The agitator has an independent switch for controlling its operation

Universal casters
Smooth wheels and brake for easy movement and stable fixation

Printer
Built-in thermo printer to record and print the real-time temperatures.

UV lighting
Sterilizes empty chamber

Access port
Dia.25mm ports for additional monitoring device

Heated glass
Prevent fogging and condensation

Sealing gaskets
Long-lasting magnetic sealing gasket locks in cold air

power switch

MDC-10



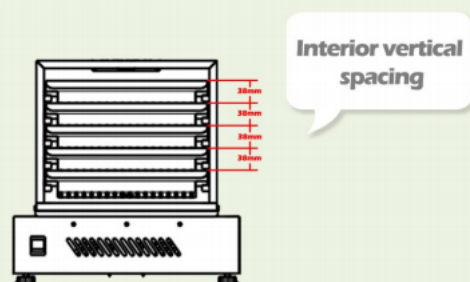
Agitation System

» System composition

The system consists of an agitator, stainless steel racks, and stainless steel drawers. The stainless steel racks are securely attached to the agitator platform and move in sync with the agitation motion. This design helps maintain platelets in a suspended state, preventing clumping or aggregation.

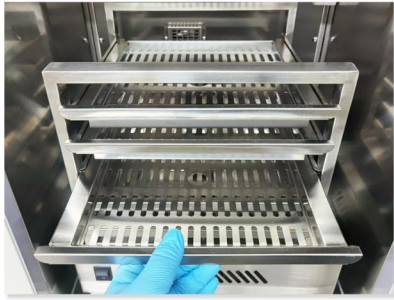


Agitation system



Interior vertical spacing

PLATELET INCUBATORS



» Stainless steel racks

The racks are made of high-quality 304 stainless steel and are available in options of 5 layers, 7 layers, 10 layers, and 15 layers. The interior vertical spacing between layers is 38mm.

» Stainless steel drawers

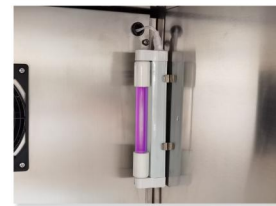
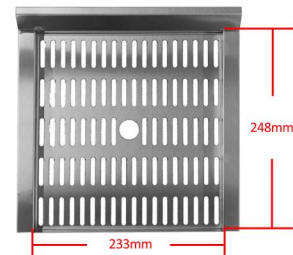
The drawers are constructed from stainless steel and designed with perforations, providing excellent ventilation performance.

» UV sterilization

The incubator is equipped with an ultraviolet germicidal lamp, allowing for comprehensive sterilization of the chamber.

» Lockable cabinets

The unit standard equipped with a built-in lock, provides a secure storage space for the preservations.



UV lighting

OPTIONAL ACCESSORIES



110V power system

Compatibility with 110V power is achieved for the refrigerator by either modifying the compressor or utilizing an additional transformer.



Voltage stabilizer

Stabilize the input voltage of a power source to protect refrigerators from the effects of voltage fluctuations.



Data Logger (TLOG-100EC)

DLW-100EC is an independent monitoring device that records the realtime temperature and provides the necessary alarmsto protect your preservations.



4G/Wifi Data Logger (RCW-360P)

A networked device that can upload real-time temperature data to the cloud. Users can monitor and manage the data through the mobile app or web-based cloud platform.



SS exterior

For customers who need stainless steel materials, there is a special cabinet customization



3Q qualification

Provides documentation for Installation and Operational Qualifications (IQ/OQ), as well as an outline of suggested topics for performance qualification (PQ).

SPECIFICATION SHEET



	Model	MDC-5	MDC-7	MDC-10	MDC-15
Specifications	Drawer QTY	5	7	10	15
	Cooling system	Forced air	Forced air	Forced air	Forced air
	Defrost	Auto	Auto	Auto	Auto
	Refrigerant	R134a	R134a	R134a	R134a
	Heating system	Electrical heating	Electrical heating	Electrical heating	Electrical heating
Cooling system	Noise(db)	48	48	48	48
	Ambient temperature (°C)	10~32°C	10~32°C	10~32°C	10~32°C
	Temperature range (°C)	22°C±2°C	22°C±2°C	22°C±2°C	22°C±2°C
	Compressor QTY	1	1	1	1
	Sensor	NTC	NTC	NTC	NTC
Power	Temperature controller	Microprocessor	Microprocessor	Microprocessor	Microprocessor
	Display	LCD display	LCD display	LCD display	LCD display
	Voltage(V)	187~242	187~242	187~242	187~242
	Frequency(Hz)	50Hz	50Hz	50Hz	50Hz
	Power Consumption(kWh/24h)	2.7	2.7	4.4	4.4
Materials	Power (W)	197W	197W	280W	280W
	Internal material	Coated steel	Coated steel	Coated steel	Coated steel
	External material	SUS 304	SUS 304	SUS 304	SUS 304
	Insulation	CFC-free PURF	CFC-free PURF	CFC-free PURF	CFC-free PURF
	Platelet bag(450ml) Qty	10	14	20	30
Measurement	NT./GT.(kg)	65/87	68/90	85/108	92/115
	Exterior size(W*D*H)(mm)	522*600*1035	522*600*1035	520*640*1290	520*640*1290
	Interior size(W*D*H)(mm)	427*360*467	427*360*467	432*462*728	432*462*728
	Package size(W*D*H)(mm)	572*685*1200	572*685*1200	575*690*1450	575*690*1450
	Shipping CBM	0.5	0.5	0.6	0.6
Alarms	20GP/40GP/40HQ	24/48/96	24/48/96	24/48/48	24/48/48
	High/low temperature	Y	Y	Y	Y
	Power failure	Y	Y	Y	Y
	Controller failure	Y	Y	Y	Y
	Sensor error	Y	Y	Y	Y
Accessories	Door ajar	Y	Y	Y	Y
	Power failure backup	72 hours	72 hours	72 hours	72 hours
	Castor	Y	Y	Y	Y
	leveling feet	N/A	N/A	Y	N/A
	Access port Qty/diameter	1/25mm	1/25mm	1/25mm	1/25mm
USB Interface	Optional	Optional	Optional	Optional	
Illumination	UV lamp	UV lamp	UV lamp	UV lamp	
Thermol printer	Y	Y	Y	Y	
Remote alarm port	Optional	Optional	Optional	Optional	
Door type/Qty	Foamed glass/1	Foamed glass/1	Foamed glass/1	Foamed glass/2	
Heated glass	Y	Y	Y	Y	
Data logger	Optional	Optional	Optional	Optional	



	Model	MDC-5	MDC-7	MDC-10	MDC-15
Capacity	Rack layer	5	7	10	15
	Rack material	SUS 304	SUS 304	SUS 304	SUS 304
	Drawer QTY	5	7	10	15
	Drawer material	SUS 304	SUS 304	SUS 304	SUS 304
	Platelet bag(450ml) Qty	10	14	20	30



Anhui Zhongke Duling Commercial Appliance Co.,Ltd

No. 1 Hexianghu road, Changfeng, Hefei, Anhui, China

info@zkduling.com

www.metherbiomedical.com

