

MPC-5V656

2~8°C Pharmacy Refrigerator



MPC-5V656 2~8°C Pharmacy Refrigerator (656 liters) is widely used in hospitals pharmacy stores and laboratories. This is for placing and preserving storage such as drugs, vaccines, enzymes, hormones, stem cells, extracted RNA and gene libraries and important biological and chemical reagents.

FEATURES



Fast pull down

Real air-forced cooling system



Super large space

656-liter (23.16 cu.ft) space, more storage



Suction circulation system

Big fans for better temp uniformity



Universal castor wheels

Castors with brake & leveling feet



Lockable doors

2 Standard locks with keys for 3 doors



High quality steel material

Antibacterial and corrosion resistant



Precise temp. control

Temp. control accurate to 0.1°C



5 types of alarm

Audible and visual alarms



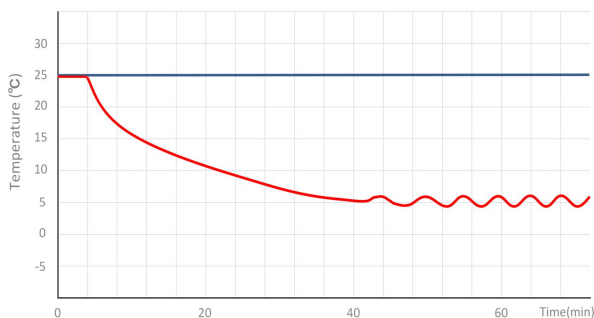
Variable space

Height adjustable shelves

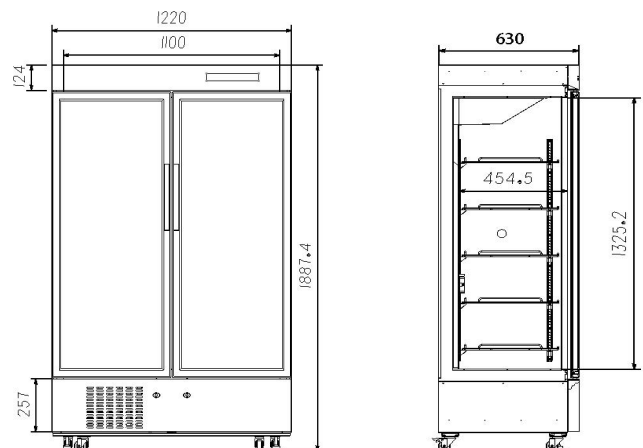


Eco-friendly

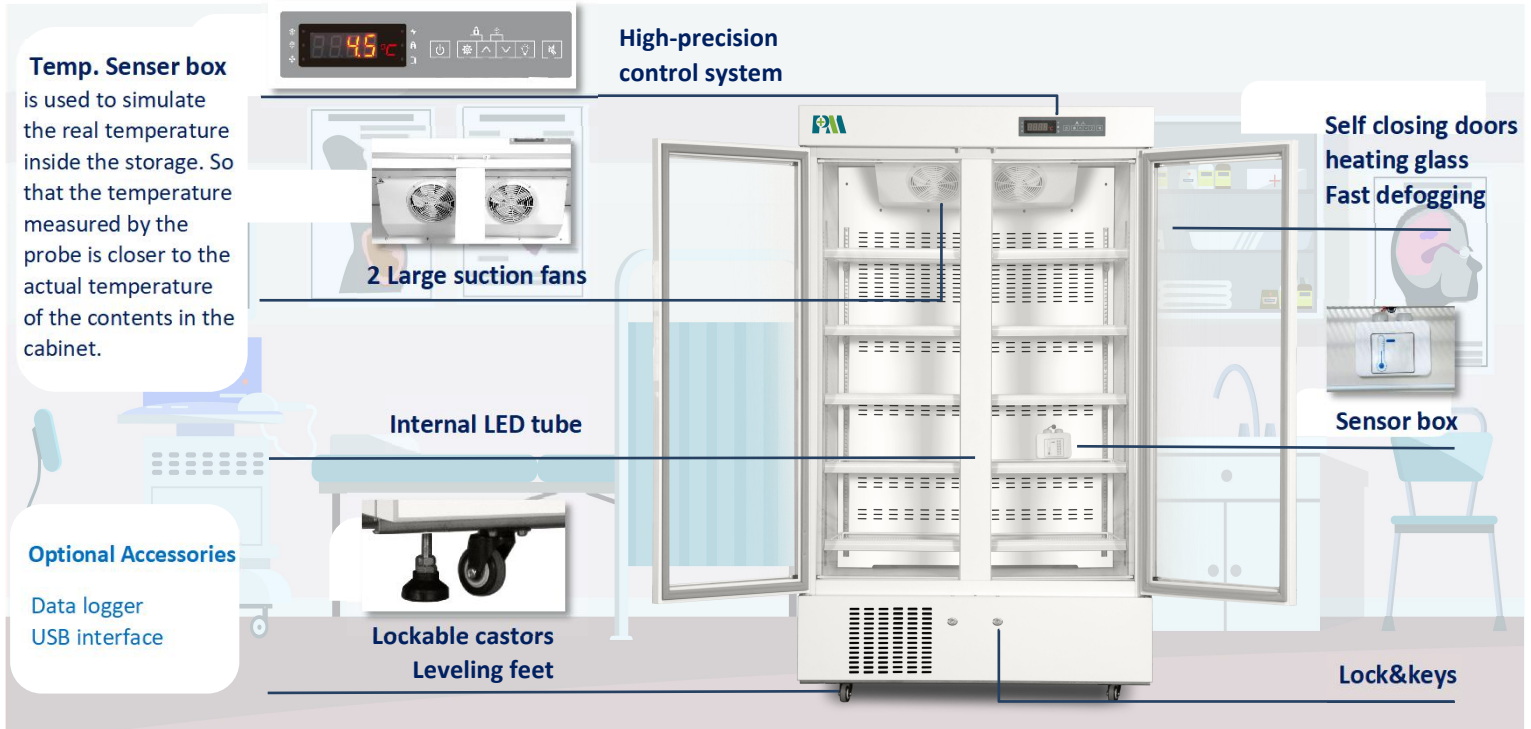
CFC-free refrigerant and energy-saving



MPC-5V656 PULL DOWN TEST



STRUCTURE



Temp. Sensor box
is used to simulate the real temperature inside the storage. So that the temperature measured by the probe is closer to the actual temperature of the contents in the cabinet.

High-precision control system

2 Large suction fans

Internal LED tube

Self closing doors
heating glass
Fast defogging

Sensor box

Optional Accessories

Data logger
USB interface

Lockable castors
Leveling feet

Lock&keys



MPC-5V656
solid doors available

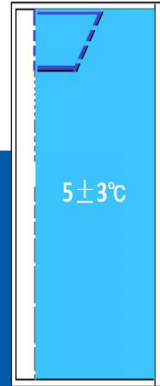
Heating glass doors

High/low temp. alarm

Power failure alarm

Thermostat failure alarm

Door ajar alarm



Real forced air circulation and excellent refrigeration system pull down the chamber temperature rapidly and keep the chamber with good temperature uniformity and fluctuation.

PARAMETER

Performance		Refrigeration System		Alarms	
Cooling method	Forced Air Cooling	Refrigerant	R600a	High/low temperature	Y
Defrost	Auto	Temp. controller	Microprocessor	Power failure	Y
Shelf/drawer	Shelves/10	Sensor	NTC	Sensor error	Y
Temperature range	2°C~8°C	Display	Digital display	Controller failure	Y
Ambient temperature	10~32°C	External material	Sprayed steel	Door ajar	Y
Noise (db)	52	Compressor QTY	1	Power failure backup	8 hours

Electrical Data		Dimensions		Other	
Voltage frequency(V/Hz)	220V 50Hz	Package size(W*D*H)(mm)	1335*710*2000	Inside door	10 shelves
Power (W)	403W	Capacity (L/cu.ft)	656/23.16	Remote alarm port	Optional
Current (A)	2.3A	Exterior size(W*D*H)(mm)	1220*630*1885	Access port QTY/Dia.	1/25mm
Power consumption	5.75kWh/24h	Interior size(W*D*H)(mm)	1100*454*1325	Internal material	Sprayed steel